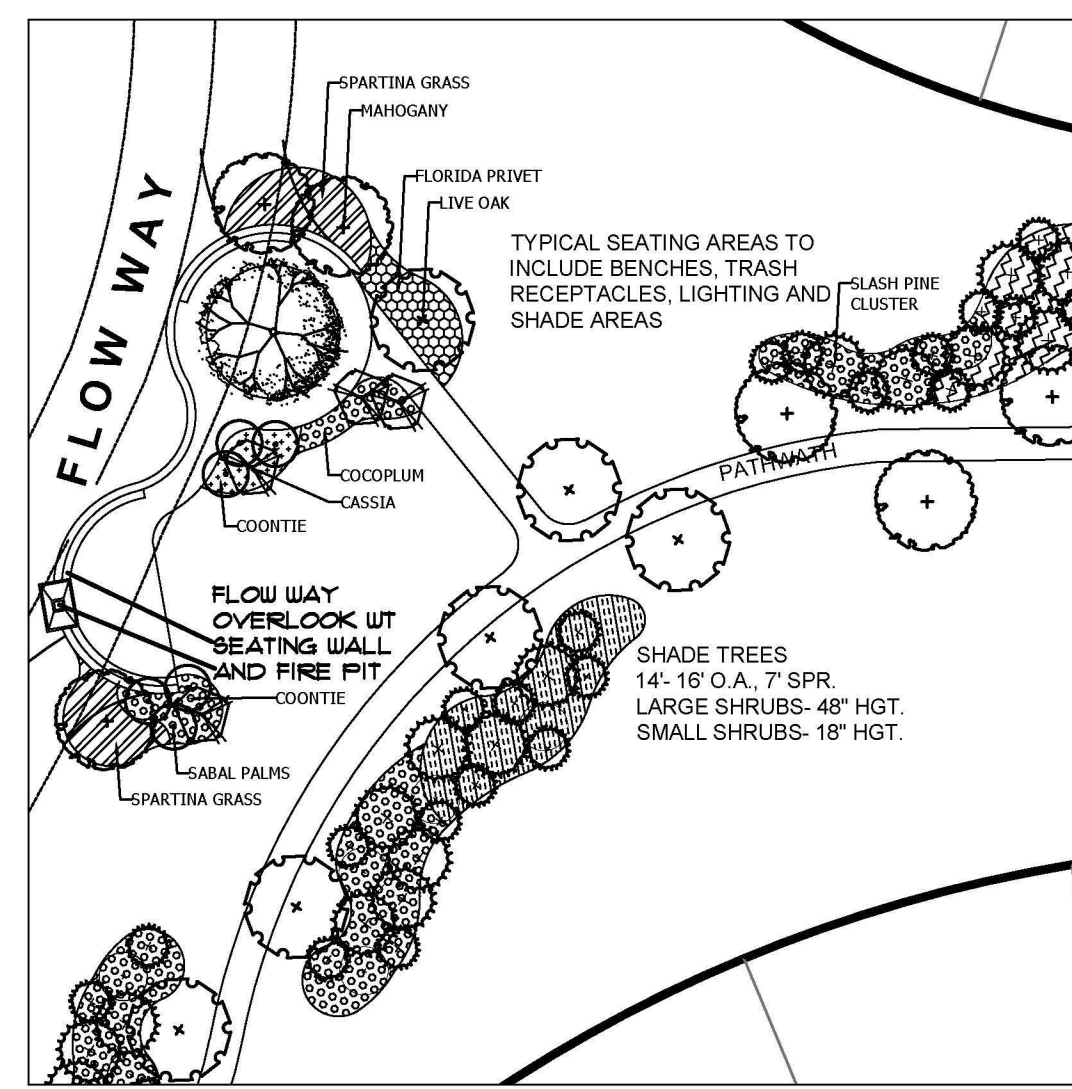
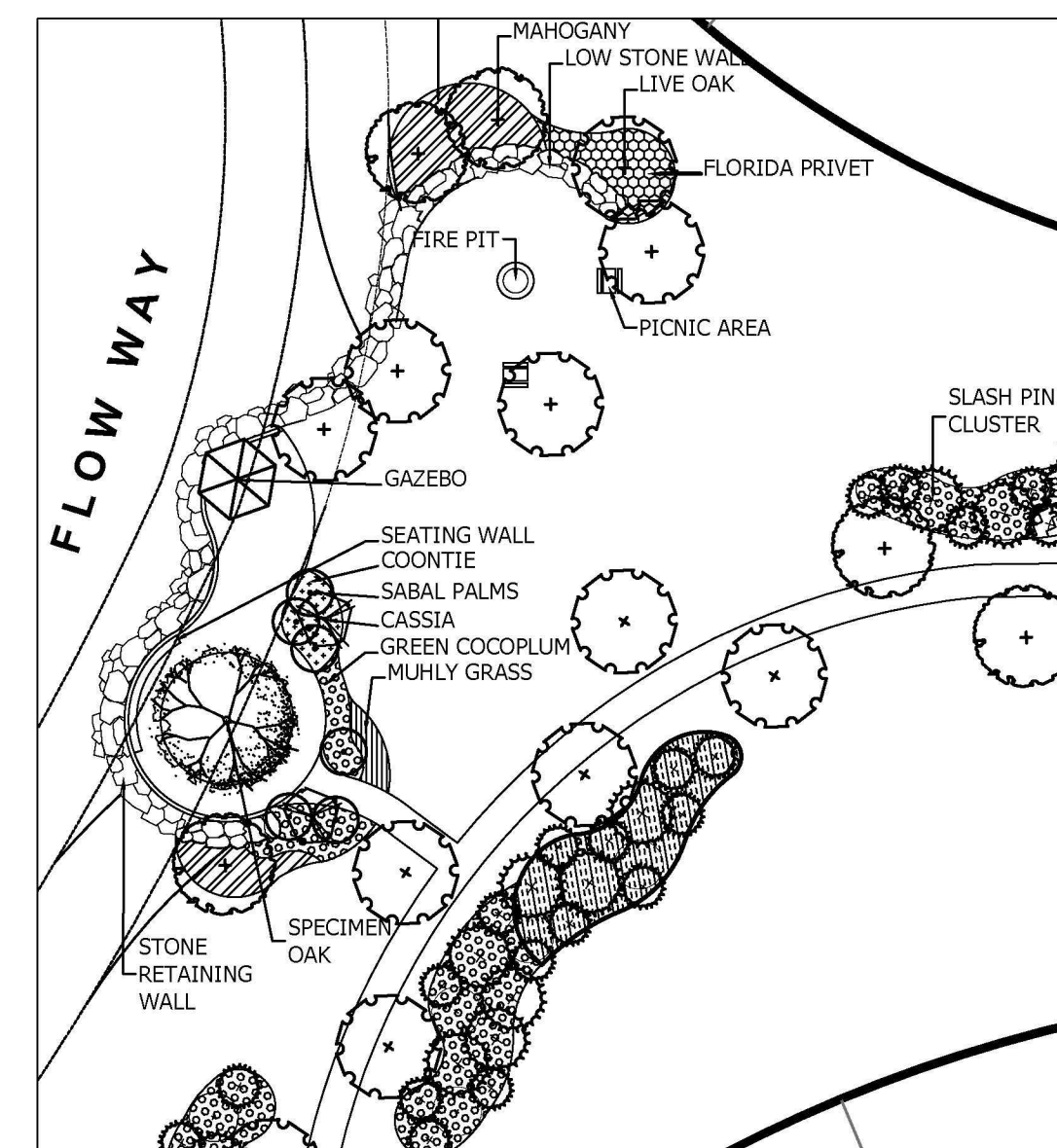


FOCAL POINT FP-1 PLAN 1"=50'-0"



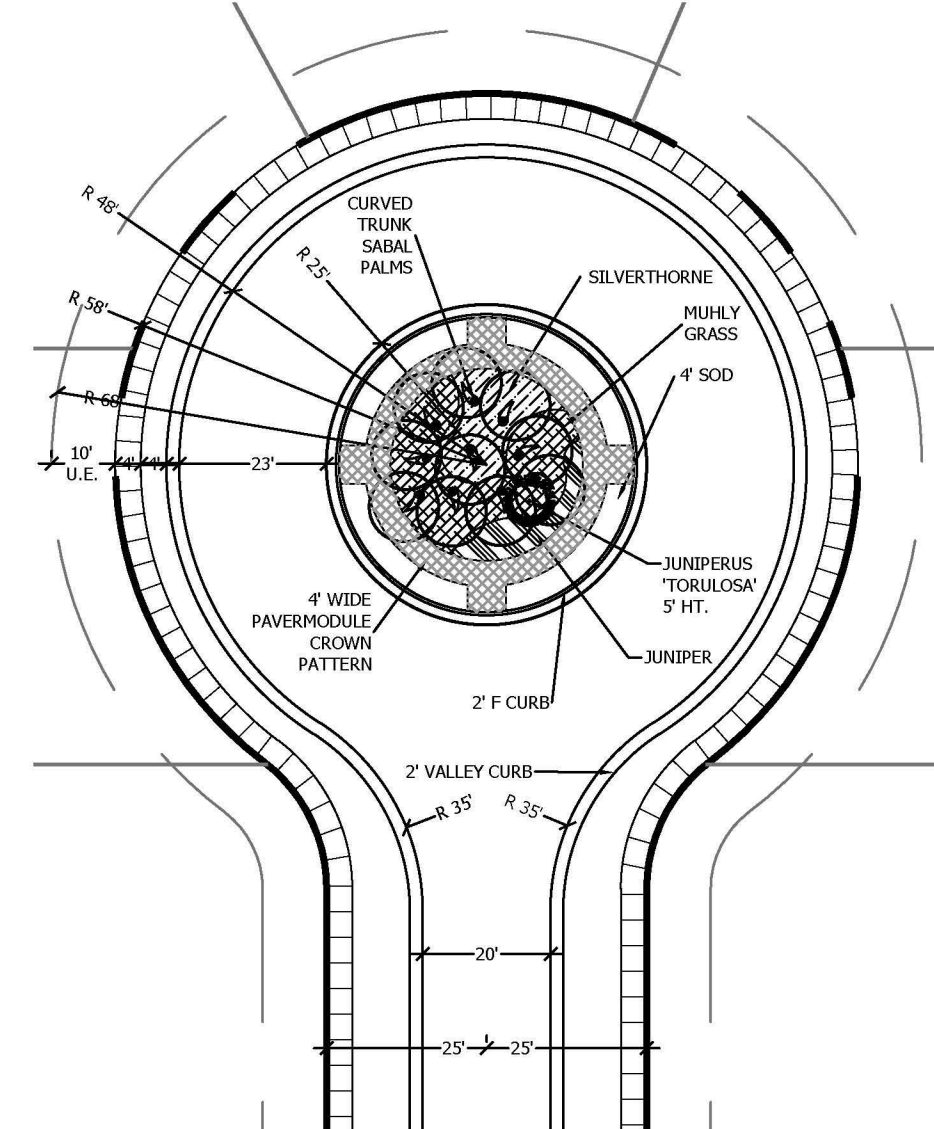
NOTE: SHOWN FOR ILLUSTRATIVE PURPOSES ONLY. THE FINAL DESIGN TO BE DECIDED BY THE PROJECTS ENGINEER

FOCAL POINT FP-1 PLAN 1"=50'-0"

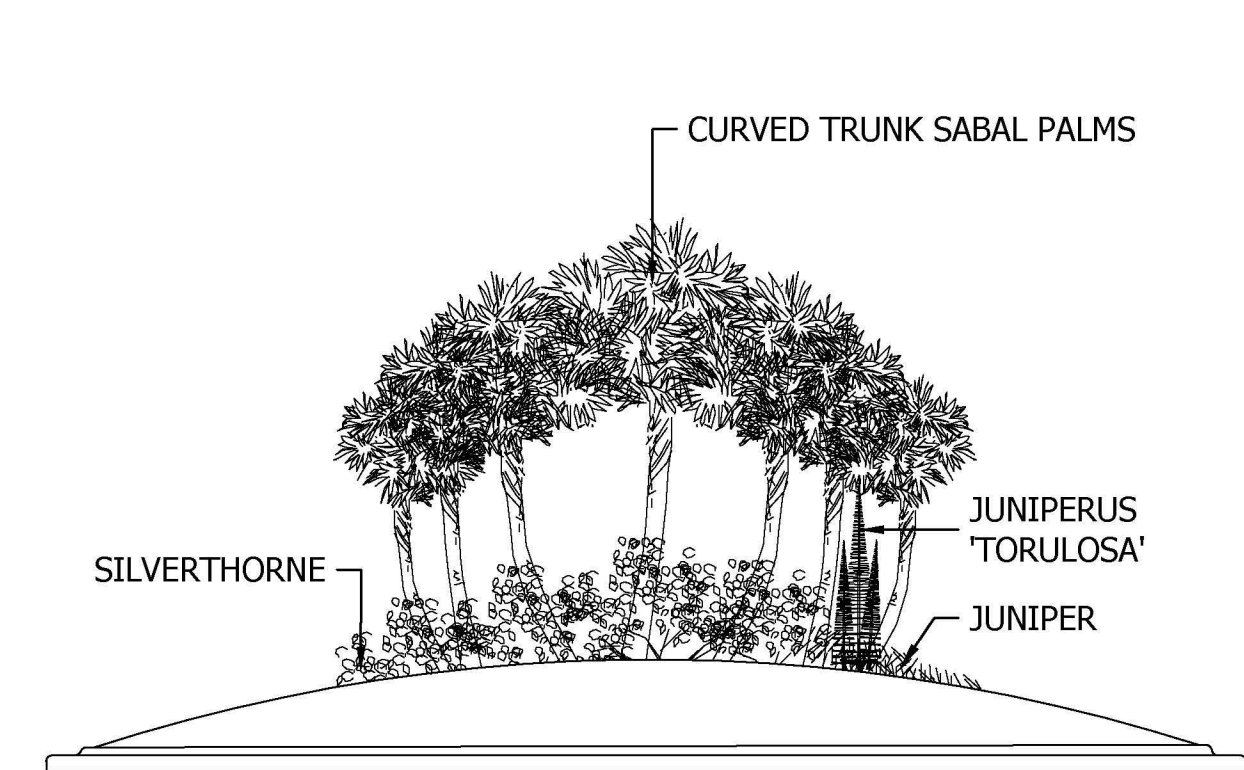


NOTE: SHOWN FOR ILLUSTRATIVE PURPOSES ONLY. THE FINAL DESIGN TO BE DECIDED BY THE PROJECTS ENGINEER

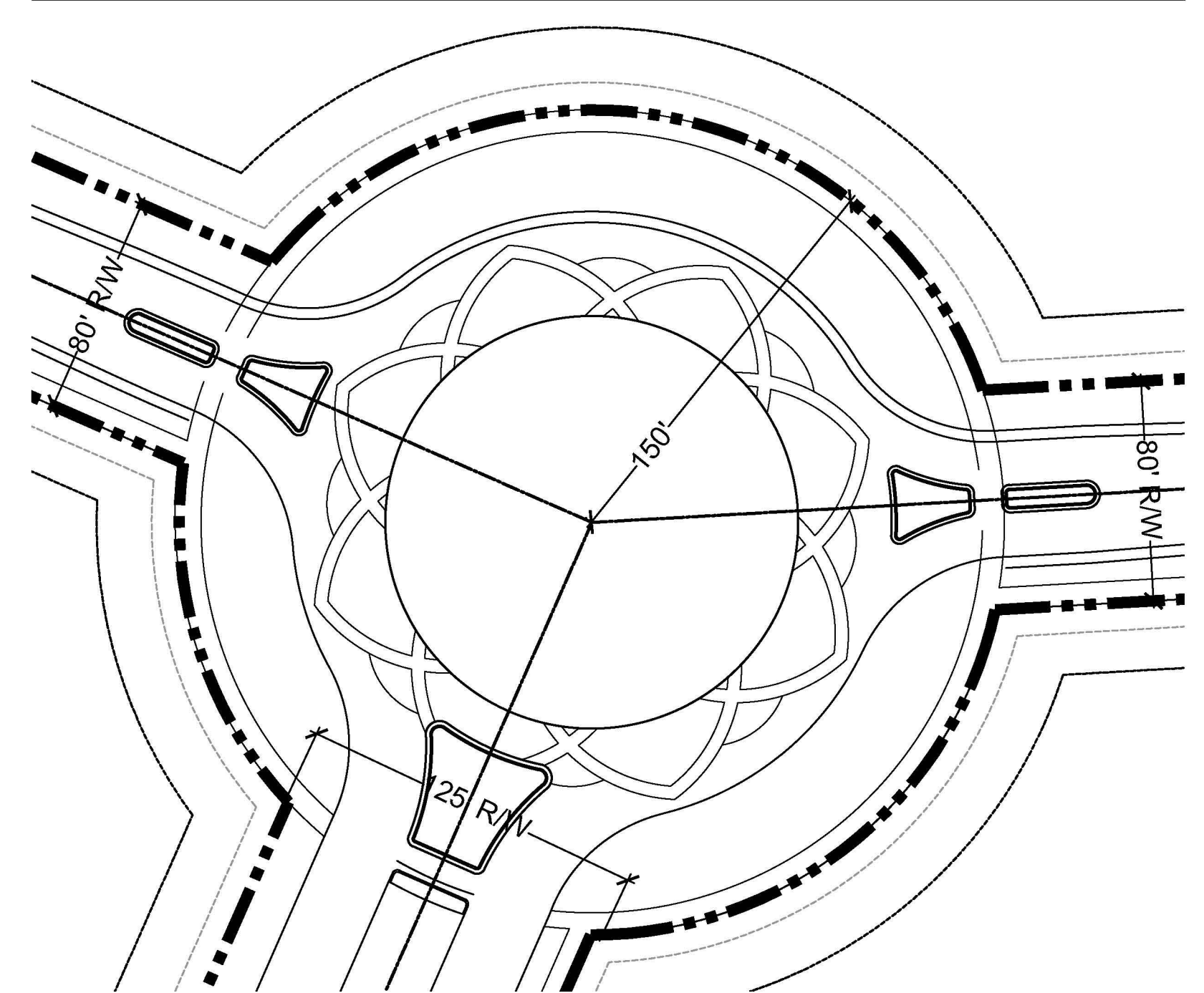
FOCAL POINT FP-2- PLAN 1'-0"= 30'-0"



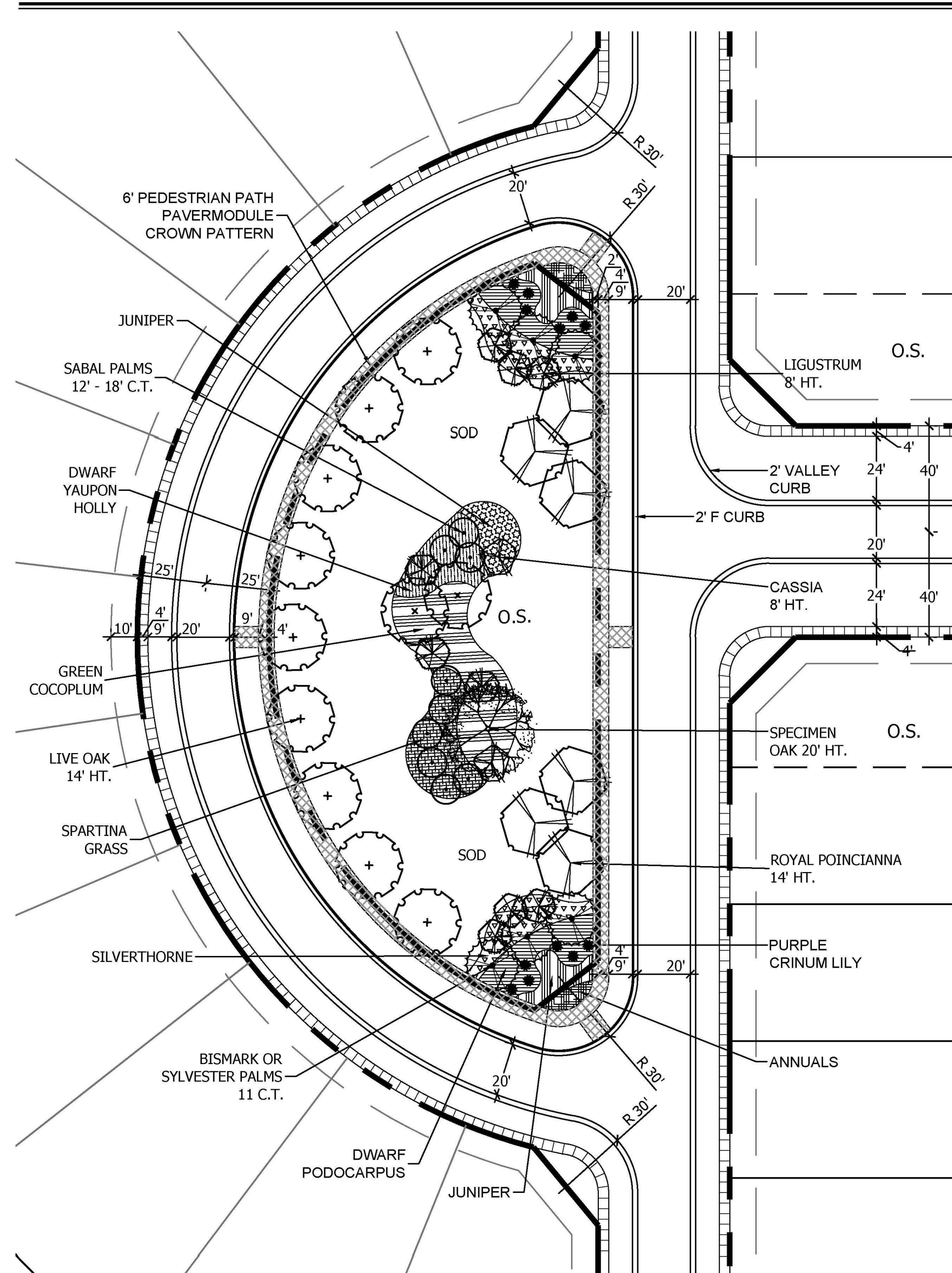
FOCAL POINT FP-2- ELEVATION 1/8"=1'-0"



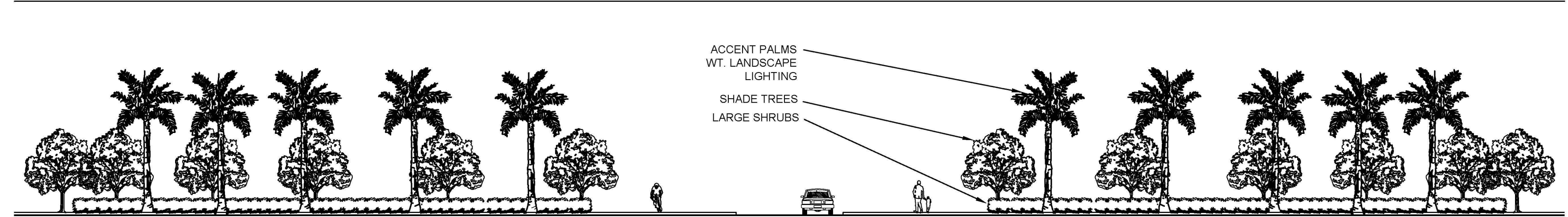
FOCAL POINT FP-3 PLAN SCALE: 1"= 50'-0"



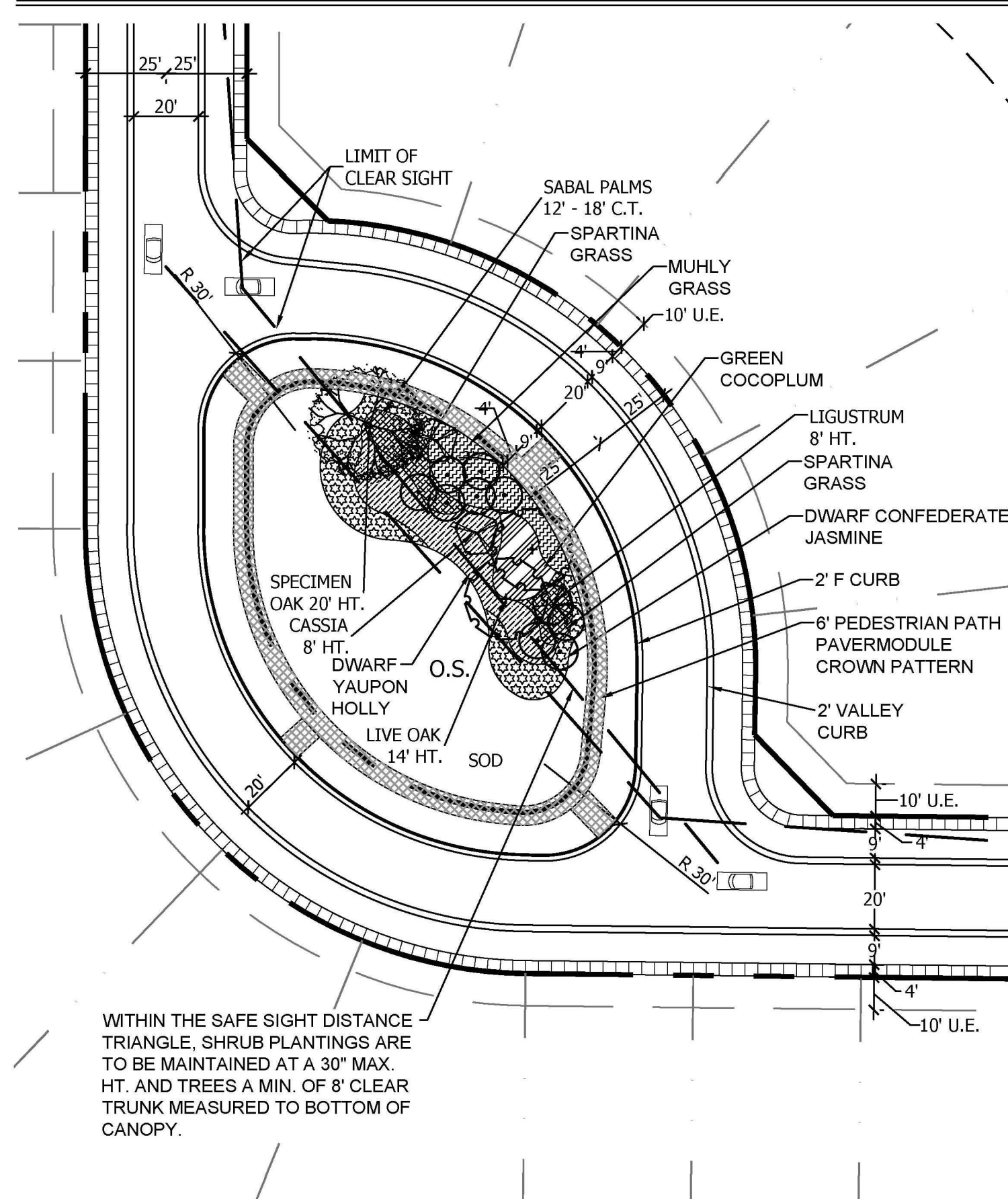
FOCAL POINT FP-4 PLAN 1"=40'-0"



FOCAL POINT FP-3 ELEVATION 1/16"=1'-0"

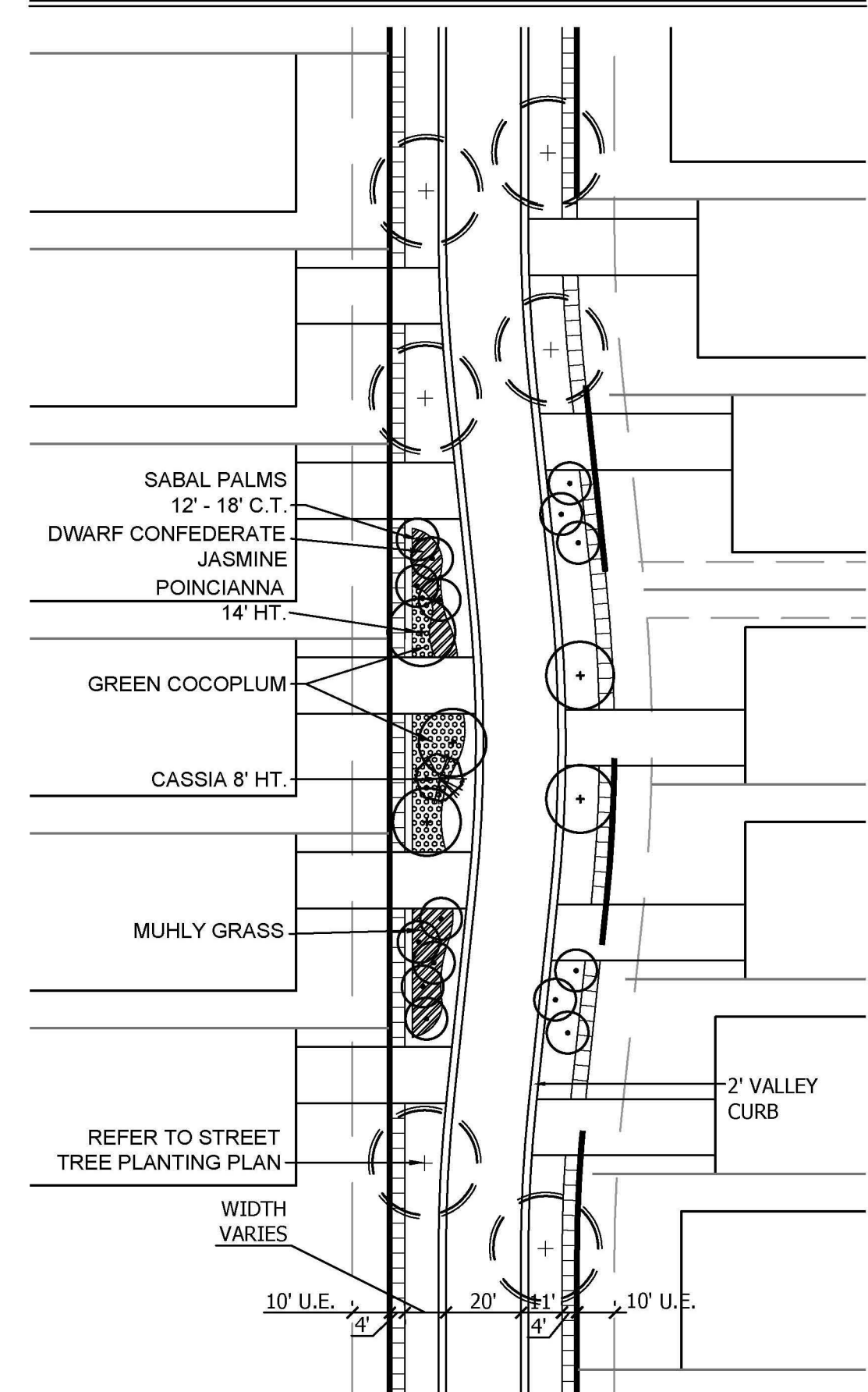


FOCAL POINT FP-5 PLAN 1"=40'-0"

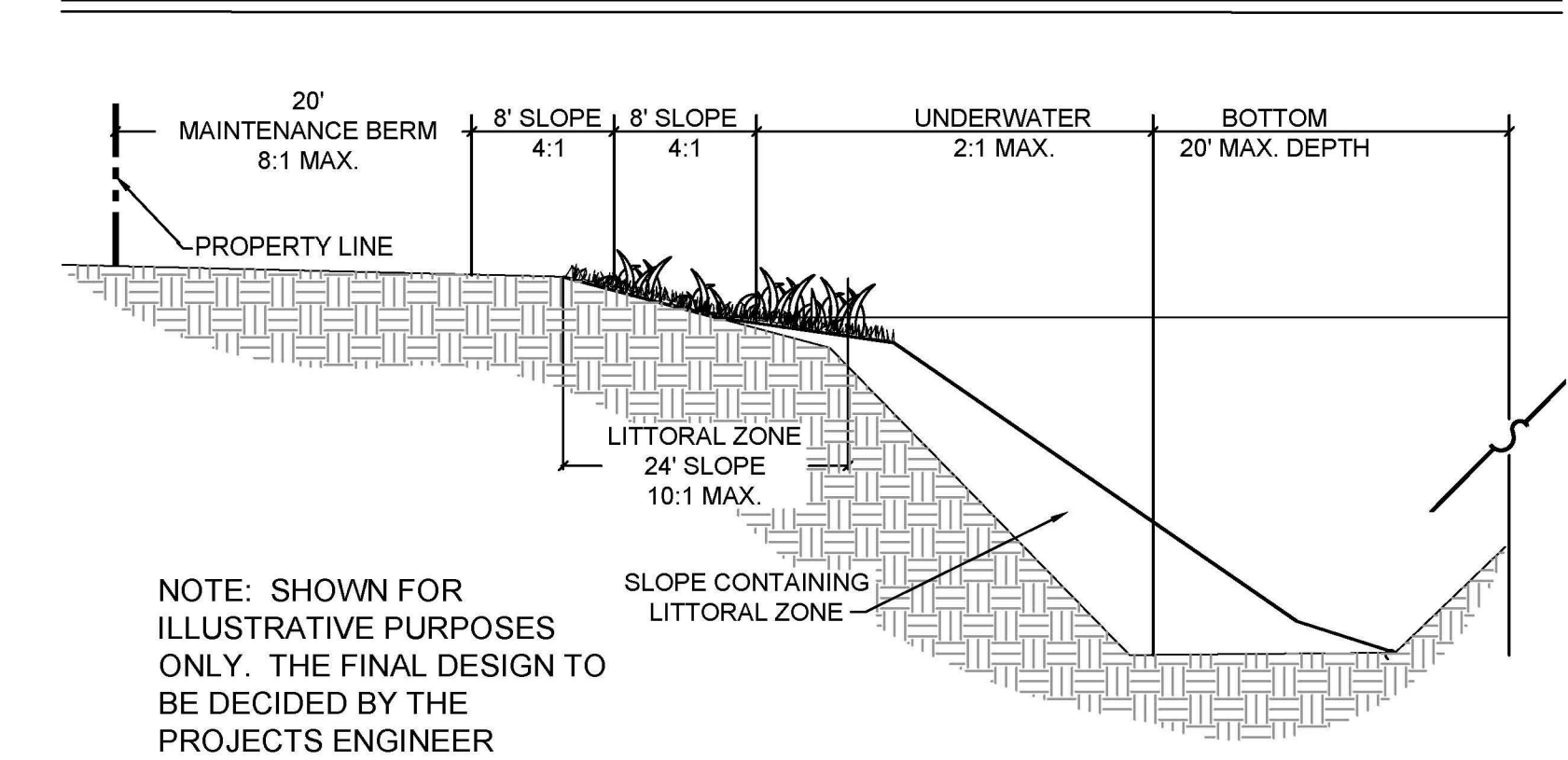


WITHIN THE SAFE SIGHT DISTANCE TRIANGLE, SHRUB PLANTINGS ARE TO BE MAINTAINED AT A 30" MAX. HT. AND TREES A MIN. OF 8' CLEAR TRUNK MEASURED TO BOTTOM OF CANOPY.

FOCAL POINT FP-6 PLAN 1"=40'-0"



TYPICAL LAKE CROSS SECTION N.T.S.



NOTE: SHOWN FOR ILLUSTRATIVE PURPOSES ONLY. THE FINAL DESIGN TO BE DECIDED BY THE PROJECTS ENGINEER

PBC Amendments:

PBC Zoning Stamp: